



# InfraBuild

*Building futures through sustainable steel*

## Victoria Processing Capabilities

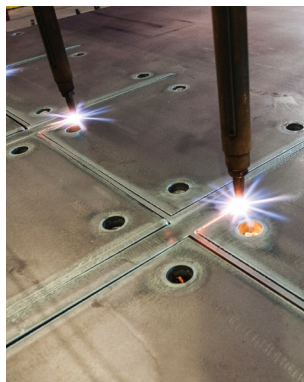
We make it easier to deliver, with steel  
supplied and processed in the one place



Cut-to-length | Haunching | Etch Marking | Spot Marking | Stitch Cutting | Notching | Drilling  
Oxy Cutting | HD Plasma Cutting | Pack Cutting | Bevelling | Coping | Stamping | Cambering

[www.infrabuild.com](http://www.infrabuild.com)

# InfraBuild Victoria Processing Capabilities



## Processing Services:

- Cut-to-length
- Haunching
- Etch Marking
- Spot Marking
- Stitch Cutting
- Notching
- Drilling
- Oxy Cutting
- HD Plasma Cutting
- Pack Cutting
- Beveling
- Coping
- Stamping
- Cambering

## We understand

InfraBuild Steel Centre offers a range of products and services to suit a variety of industries. With extensive experience in the steel industry, our staff can advise on ways to estimate, streamline and tailor steel solutions to deliver more cost-effective outcomes on any project. Having confidence in a supplier to process large or small volumes of steel and manage the complexities and risks to deliver an accurate, on-time project is critical. At InfraBuild Steel Centre we ensure that from your project planning to your steel supply, through to processing and delivery, we are working to optimise your steel usage to minimise waste and maximise cost efficiencies.

## We make it easier

With our processing equipment owned and operated by InfraBuild Steel Centre you can consult with our experts at every stage to manage your processing requirements. Whether its accuracy, tolerance or repeatability you need, we achieve this through fully programmable machinery, and the long term experience of our people. This extensive industry knowledge and national support network ensures you and your projects are receiving the best level of service.

## We deliver

Having steel supplied and processed in the one place can make projects a lot easier. Through our integrated supply chain we can add value to clients by sourcing complementary products through our industry partners and can deliver in an order that suits your schedule. Whether your steel needs are large or small, we offer delivery to site or your warehouse - or you can pick-up from one of our locations.

## Our products

Our range includes structural and tubular steel, reinforcing and merchant bar, sheet and plate as well as pipes, valves and fittings, flooring, complementary products and accessories. We also have the ability to source local and international products with short lead times.

## Design optimisation

As part of the broader InfraBuild network, we also have significant expertise in working with our customers to provide design optimisation to minimise risk whilst reducing waste and cost. Optimising material use can also aid in the sustainability credentials needed for awarding Green Star® steel credit points. Customers should talk to InfraBuild Steel Centre early in their project to see how more sustainable practices can be adopted.



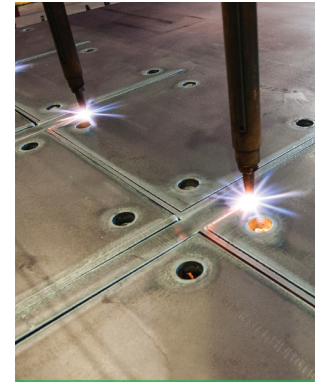
# Oxy Profiler / HD Plasma

Processing capabilities:

HD Plasma Cutting, Oxy Profiling, Punching, Drilling, Tapping, Beveling, Cropping, Notching

HD Plasma & Oxy Profiling	Specifications
Sections – Plate	Plasma Cutting, Plasma Etching, Flame Cutting
Thickness Range	3mm to 200mm
Maximum Plate Size	3200mm x 21500mm
Hole Sizes (min. 16 mm)	Dia. = Thickness x 1.5mm (on larger plates the ratio decreases)
Tolerances	Standard +/- 2mm

**Customer benefits:** Suitable for bridge building applications, large gear infills, heavy earthmoving parts. Bed width allows side by side plate stripping, delivering speed and productivity.



## Additional services:

We can also make your project easier and save you time and effort by providing additional value added services including:

- Specialised Welding
- Custom Galvanizing
- Various Poly-Coats from single to triple layer
- Fusion Bond
- Epoxy coating
- Colour-Coding
- Painting
- Pickling
- Mechanical cleaning and priming
- Die stamping
- Cut, bend and process ACRS accredited reinforcing bar

## Plateline/Oxy/Plasma examples:



# Beamline / Copping Beamline



Processing capabilities:

Oxy HD Plasma Cutting, Drilling, Stamping, Copping, Notching, Haunching, Scribing, Etching, Stitch & Mitre Cutting



FICEP Beamline 1203 DD	Specifications
Sections – UB, UC, Welded Sections, Channels, Structural Angles, RHS	Structural sections, Rail and Tubular product. From 150mm width up to 1200WB
Machine Capability	Cutting, Drilling, Mitre Cutting, Marking, Hard Stamping, CNC Programming
Maximum Length	20000mm*
Drill Sizes	10mm to 38mm
Mitre Cutting	Up to -45/+60 degrees
Tolerances	Standard +/- 2 mm, Mill, -0 +10mm

**Customer benefits:** FICEP machines are capable of cutting and drilling a wide range of sections and heavily used in the pre-fabrication of all structural beams. CNC programming allows for guaranteed section lengths and holes (within tolerances). High speed bandsaw cutting ensures excellent cut quality and quick turn-around of processed lengths in comparison to other length based cutting methods. \*Refer to your local Branch or Account Manager for more specific details and tolerances.



FICEP Beamline 1201 RC	Specifications
Sections – UB, UC, Welded Sections, Channels, Structural Angles	Oxy HD Plasma, Cutting, Drilling, Stitch & Slot Cutting, Haunching, Copping, Notching, CNC Programming
Maximum Length	18000mm
Beam Height Min./Max.	80/1220
Flange Width Min./Max.	42/600
Programmable weld prep angles	+/- 45 degree

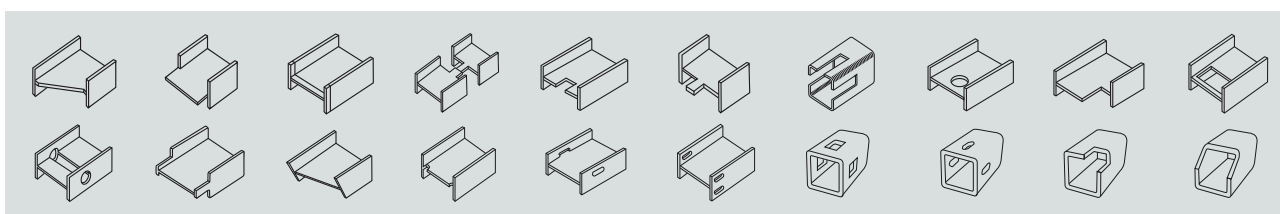
**Customer benefits:** Robotic, oxy and HD Plasma coper allowing for complex coping and processing solutions. High repeatability and accuracy with complicated cutting operations. Cutting operations can be done in line with drilling units in order to save time.



FICEP Beamline 603 BL4	Specifications
Sections – UB, UC, Channels, Structural Angles	From 100mm to 530mm UB
Machine Capability	Cutting, Drilling, Mitre Cutting, Hard Stamping, CNC Programming
Maximum Length	18000mm
Drill Sizes	8mm to 40mm
Mitre Cutting	-60/+60 degrees
Tolerances	Standard +/- 2 mm

**Customer benefits:** As per the FICEP 1203DD, but a more compact beamline ideal for processing of smaller structural members including UB's (530mm and below), UC's, Channels and Structural Angles.

## Types of cut:

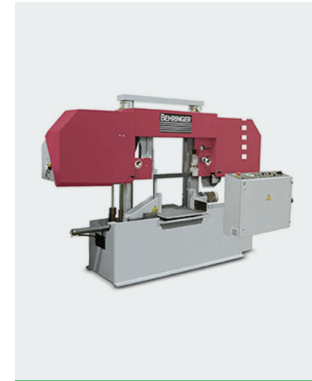


# Bandsaw / Cambering

Processing capabilities:  
Mitre Cutting, Saw Cutting, Cambering, Pack Cutting

HP Behringer 430 Bandsaw	Specifications
Sections – UB, UC, Structural Angles, RHS, Pipe & Flat Bar	Saw Cutting, Mitre Cutting and Pack Cutting
Maximum Length	15000mm
Maximum Width & Height	400mm to 500mm
Mitre Cutting	Up to -45 degrees
Tolerances	Standard +/- 2mm

**Customer benefits:** Pack cutting capability for uniformity of lengths.



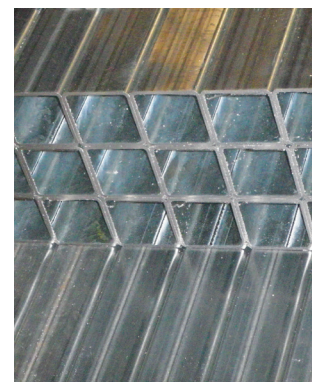
BC900 Bay-Lynx Cambering Machine	Specifications
Sections – UB & UC	Cambering only
Maximum Length	7000mm to 18000mm
Maximum Width	250mm to 610mm
Maximum Camber Deflection	15mm to 70mm
Tolerances	+/- 8mm

**Customer benefits:** Cost effective alternative to heat or mill cambering. Can also be used to straighten beams and other shapes.



Various Cold Saws & Bandsaws	Specifications
Sections – UB, UC, Structural Angles, RHS, Pipe & Flat Bar	Saw Cutting, Mitre Cutting and Pack Cutting
Maximum Length	20000mm
Maximum Width & Height	Varies by machine (call for enquiries)
Mitre Cutting	Up to -45/+60 degrees
Tolerances	Standard +/- 2mm

**Customer benefits:** Pack cutting capability for uniformity of lengths.



## Metal Framing:

## Coating Services:

## Laser Cutting:

## Galvanizing:





## Compliance & Traceability

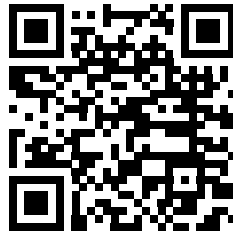
InfraBuild supplies products that are compliant to the relevant Australian Standards. The quality of our products are checked by NATA endorsed testing laboratories. At all of our manufacturing sites, InfraBuild has third party accreditation to Environmental Management System ISO 14001. In addition, our hot rolled products are all produced at mills with ACRS third party accreditation ensuring certification for reinforcing, pre-stressing and structural steels.

## National Branch Network

Our national branch processing network means that we can provide solutions for you, wherever you need them. You also benefit from the comprehensive service that comes from national account management. So when you're relying on a quality result, you can trust us to deliver it.

Find your  
InfraBuild Steel Centre:

**[www.infrabuild.com](http://www.infrabuild.com)**



Please note that any specifications or technical data referred to in this publication are subject to change and/or variation or improvement without notice and no warranty as to their suitability for any use is made. Photographs shown are representative only of typical applications. This brochure is not an offer to trade and shall not form any part of the trading terms in any transaction. Copyright 2022 InfraBuild Trading Pty Limited (ABN 50 007 519 646).